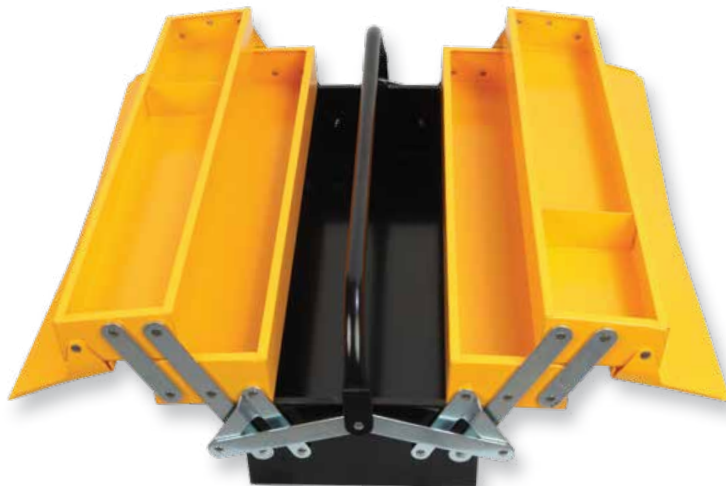




## 5 TRAY CANTILEVER TOOL BOX

- General purpose cantilever tool box
- Manufactured from heavy gauge steel sheet
- Corrosion resistant powder coated finish
- Trays open automatically when handle is depressed & close when lifted.
- Lid incorporates provision for padlock



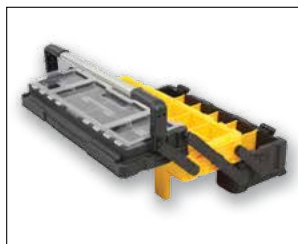
ORD. #	SIZE	
22025008	21" × 8" × 9"	541 × 213 × 221 mm



\*Supplied without tools

## 3 TRAY CANTILEVER ORGANIZER TOOL BOX

- Heavy Duty impact resistant polypropylene tool box with 3 levels of cantilever organizer trays
- Adjustable dividers render flexibility to store different sized objects
- Full spread cantilever mechanism gives quick & easy access to all stored parts
- Sturdy aluminium handle secures lid in the up position
- Back support legs for maximum stability
- Strong metal clasps for added security



ORD. #	SIZE	
22025091	21" × 8" × 9"	530 × 200 × 230 mm



\*Supplied without tools